



BENJAMIN HILL

MINING CORP

BREAKING GROUND IN THE CABORCA GOLD BELT

NOVEMBER 2021

This presentation includes certain “forward-looking information” within the meaning of applicable Canadian securities legislation. Examples of such forward-looking information includes information regarding the timing, extent and success of exploration, development and mining activities, conclusions of economic evaluations, project financing requirements, project permitting, planned infrastructure for the region and the estimated and anticipated economic impact of Benjamin Hill’s mineral projects. Forward looking information is based on reasonable assumptions that have been made by the Company as of the date of such information and is subject to known and unknown risks, uncertainties and other factors that may cause the actual results, level of activity, performance or achievements of the Company to be materially different from those expressed or implied by such forward-looking information, including but not limited to: the impact of general business and economic conditions; risks related to government and environmental regulation, actual results of current exploration and development activities, changes in project parameters as plans continue to be refined; problems inherent to the marketability of base and precious metals; industry conditions, including fluctuations in the price of base and precious metals, fluctuations in interest rates; government entities interpreting existing tax legislation or enacting new tax legislation in a way which adversely affects the Company; stock market volatility; competition; risk factors disclosed in the Company’s most recent Management’s Discussion and Analysis and Annual Information Form, available electronically on SEDAR; and such other factors described or referred to elsewhere herein, including unanticipated and/or unusual events. Many such factors are beyond Benjamin Hill’s ability to control or predict.

Although the Company has attempted to identify important factors that could cause actual results to differ materially, there may be other factors that cause results not to be as anticipated, estimated or intended. There can be no assurance that forward-looking information will prove to be accurate as actual results and future events could differ materially from those reliant on forward-looking information.

All of the forward-looking information given in this presentation is qualified by these cautionary statements and readers are cautioned not to put undue reliance on forward-looking information due to its inherent uncertainty. Benjamin Hill disclaims any intent or obligation to update any forward-looking information, whether as a result of new information, future events or results or otherwise, except as required by law. This forward-looking information should not be relied upon as representing the Company’s views as of any date subsequent to the date of this presentation.

Mineral resources that are not mineral reserves do not have demonstrated economic viability. The estimate of mineral resources may be materially affected by environmental, permitting, legal, title, socio-political, marketing or other relevant issues.

Greg Bronson, P.Geol, and Qualified Person as defined by National Instrument 43-101–Standards of Disclosure for Mineral Projects (“NI-43-101”), has reviewed and approved for the technical information contained in this presentation

Benjamin Hill Mining Corp. is a Canadian-listed junior gold exploration company focused on exploring and developing projects in Mexico.

The Company recently negotiated tenure and gained surface access to 6400ha of contiguous mineral concessions with historical workings that have not seen any exploration activity in decades. This is the first modern exploration of this highly prospective ground.

Benjamin Hill Mining projects are ideally located close to exceptional infrastructure: 150km North of Hermosillo in the state of Sonora, and 150 km south of Tucson, Arizona

Benjamin Hill holds permits for 80 defined drill pads with plans for 11,000-meter Phase 1 drill program to commence January 2022

SYMBOLS

CSE: BNN

OTCBB: BNNHF

SHARE STRUCTURE

42M Outstanding

48.5M Fully Diluted

HEAD OFFICE:

1050-12471 Horseshoe Way
Richmond, BC

\$ 0.27 – 0.67

52 WEEK LOW / HIGH

41,914,012

SHARES ISSUED AND OUTSTANDING

\$17,600,000

MARKET CAP
AS OF NOVEMBER 10, 2021

48,491,069*

FULLY DILUTED

- * 475,000 share options of the company at \$0.43, exercisable in whole or in part on or before October 25, 2026
- 2,700,000 share options of the company at \$0.59, exercisable in whole or in part on or before Feb. 25, 2026
- 548,210 share options of the company at \$0.25, exercisable in whole or in part on or before July 22, 2025
- 3,328,847 share warrants at \$0.15 cents exercisable in whole in part on or before December 4, 2022

THE BENJAMIN HILL EXECUTIVE AND DIRECTORS

COLE MCCLAY CEO; DIRECTOR

- Mr. McClay is instrumental in raising venture capital and currently acts as consultant for international mining, exploration, agriculture, and health care businesses
- Over 10 years of senior management experience, influential in the development of corporate strategy, operations, and marketing platforms.
- Skilled team builder experienced in managing teams from business start-up to whole company acquisition
- Cole holds a Bachelor of Commerce Degree from Royal Roads University

SERGIO GARCIA CFO

- Mr. Garcia has worked as a Tax Auditor in Mexico for the Tax Administration Service (SAT), for the past 4 years
- Master's Degree in Legal Mexican Taxes from the Western Institute of Business Capacitation in Guadalajara
- Graduated in Public Accounting from University of Sonora
- Former General Accountant in the firm of DFK International, Hermosillo Sonora
- Former Auditor in the firm of Sonora Professional

GREG BRONSON PRESIDENT; DIRECTOR

- Mr. Bronson is a geologist with 30 years experience in mineral exploration and mineral project development
- Greg holds P.Geo. designations from APEGBC and NAPEG
- B.Sc.S., Geology, University of Alberta
- Qualified person for Benjamin Hill Mining Corp.
- Director: Sentinel Resources, Bathurst Metals, Avanti Energy

JUAN J. DUARTE BRAVO DIRECTOR

- Mr. Duarte Bravo is a Lawyer, with over 20 years as counsellor and legal representative of international mining companies in Mexico
- Leader in the acquisition of mining concessions involving government, private and ejido-owned properties
- Adept at managing corporate environmental compliance
- Expedited mine exploration and exploitation permits in protected natural areas
- Attained permits for Mexican territorial water rights and development environmental permits

ANDREW DANIELS VP CORPORATE DEVELOPMENT

- Mr. Daniels has 35 years experience in mining, exploration, finance and management
- Managing Director InDepth Analytics an AI resource and mining analytical platform
- Director, Caerus Mineral Resources
- Acting President C3 Bullion
- Past Director Global Mining Finance, Deutsche Bank AG, Canada
- B.Sc.S., Geology, Acadia University
- Andrew holds a P.Geo. Designation from APGO, Ontario

TYRONE MCCLAY DIRECTOR

- Mr. McClay is a management consultant with mining companies in South America and North America
- Experienced in corporate finance, investment banking and capital market focused on the mining industry
- Skilled at public and private equity offerings, valuations, fairness opinions, and merger and acquisition transactions
- Served on the board of Cicada Ventures, Stealth Resources and Mosquito Creek Mines

Dr. MACARIO ROCHA-ROCHA
PROJECT MANAGER

- Ph.D. Economic Geology, University of Nevada
- 24 years industry experience in technical, management and executive roles
- Head of Mineral Exploration Department at the Mexican Geological Survey
- Professor, Co-Advisor & Member of the Academic Committee for geological and geophysical post graduate programs at the Mexican Geological Survey in cooperation with several Mexican Universities
- Consulting Geologist on mineral exploration and mining projects throughout Mexico

DAVID JONES
SPECIAL ADVISOR

- Professional Geologist with over 40 years mining experience
- Discovered Los Filos deposit while chief geologist for Tech Corp.
- Led Tech Corp's bid to successfully acquire the Morelos Norte reserves from Torex Gold.
- Credited with identifying targets that lead to discovery of bonanza grade Au-Ag Switchback Mine, Qaxaca, Mexico
- Director of Minarium Gold, Madero Metals and privately held Acapulco Gold

CHRISTIAN St. CLAIR
SENIOR GEOLOGIST

- Professional Geologist with over 10 years mining experience
- Project geologist and logistics coordinator for Newmont Corp on their Central Mesa project
- Project geologist, database and GIS Manager for Silvercrest Metals on their Las Chispas project
- Head GIS Geologist for SPM serving industry clients including Peñoles and GoGold

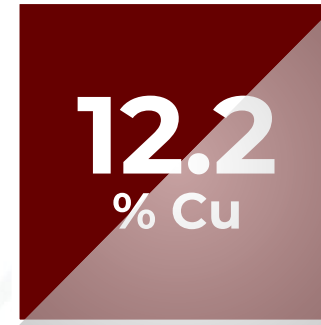
SERGIO A. TRELLES
SPECIAL ADVISOR

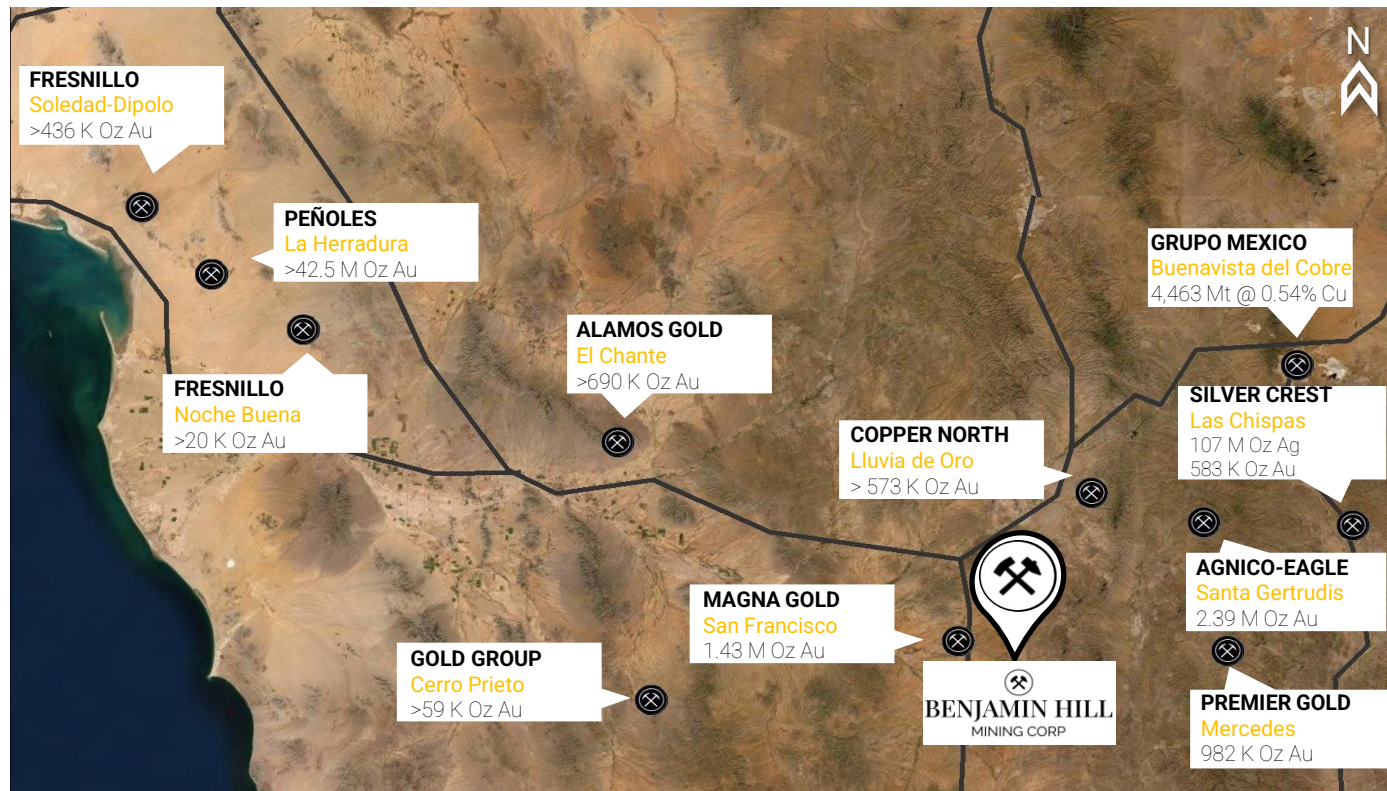
- Professional Geologist with over 40 years mining experience
- Executive and Management roles in public and private mining companies operating in Canada and Mexico.
- Former Director-General of mining promotion, state of Sonora
- Past Assistant Director of mining resources for Mexico's Geological Survey
- Former President of the Association of Mining Engineers, Metallurgists and Geologists of Mexico
- Past Chairman of the College of Mining Engineers, Metallurgists and Geologists of Mexico

JORGE CIRETT
SENIOR GEOLOGIST

- Professional Geologist with over 30 years mining experience
- Director, Gambusino Prospector de Mexico, SA de CV
- Project experience in Mexico, Canada, USA, Dominican Republic, Ireland, Russia, Indonesia, Australia, Peru and Panama with BHP, MIM and Jr. companies
- Accomplished at project generation and evaluation
- Skilled database manager, public relations liaison, health, safety and environmental manager

Samples have returned results for gold, silver and copper with best samples yielding





REGIONAL ENVIRONMENT



Commodity	Gold, Silver, Copper
Location	Sonora, Mexico, Caborca Gold Belt
Nearest City	Hermosillo, Sonora, MX 150 km South Tucson, Arizona, USA 140 km North
Nearest Major Mines	San Francisco – Magna Gold Las Chispas – Silver Crest Soledad Dipolos – Fresnillo Noche Buena – Fresnillo Santa Elena – First Majestic Las Mercedes – Premier Gold La Colorada – Pan American Silver La Herradura – Peñoles
Land Package	6400 contiguous hectares, 8 main exploration areas
Exploration Highlights	Assay: 31.4 g/t Au 12.2% Cu 358 g/t Ag
Infrastructure	Direct highway access, Property road network, Natural gas service, Electrical grid service, Telecommunications.

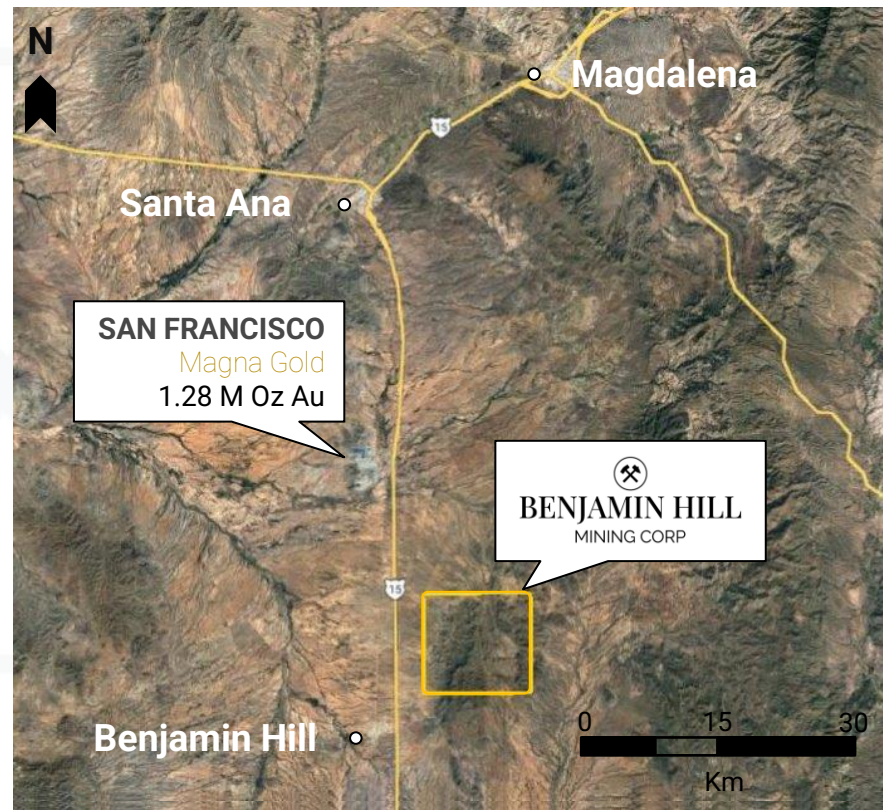
THE SONORA PROPERTY

➤ **6,400 Hectare Untested Tenure**
Privately held claims consolidated and surface access granted for the first time in decades.

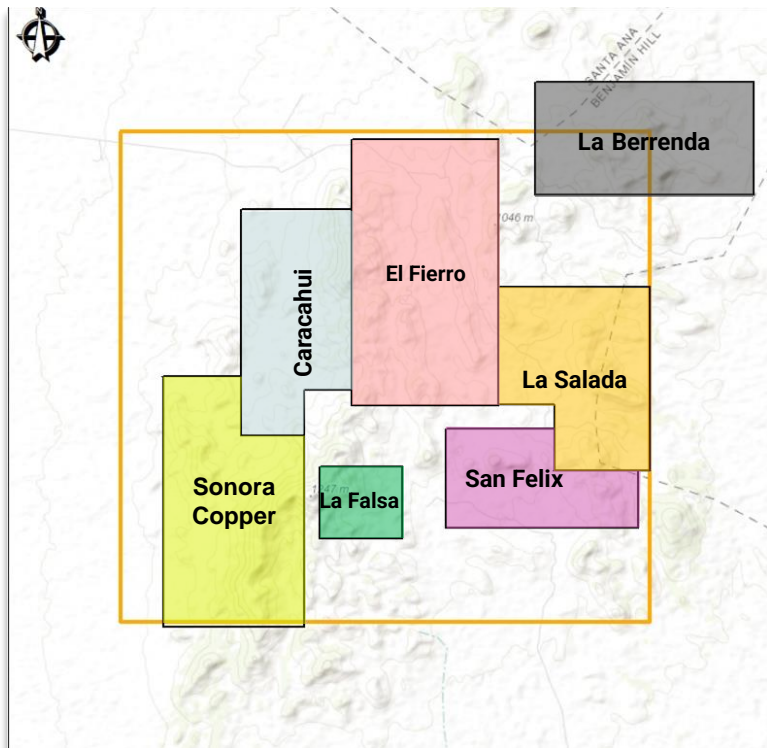
➤ **Historical Au, Ag & Cu Showings**
Several adits scattered on property.
Undocumented underground copper-gold production in 1950's

➤ **Exceptional Infrastructure**
Nearby operating mill, easy highway access, available power and local skilled labor.

➤ **Only 150km North of Hermosillo**
Conveniently close to a mining supercenter and only 140 km south of Tucson, Arizona, United States



MAIN EXPLORATION AREAS

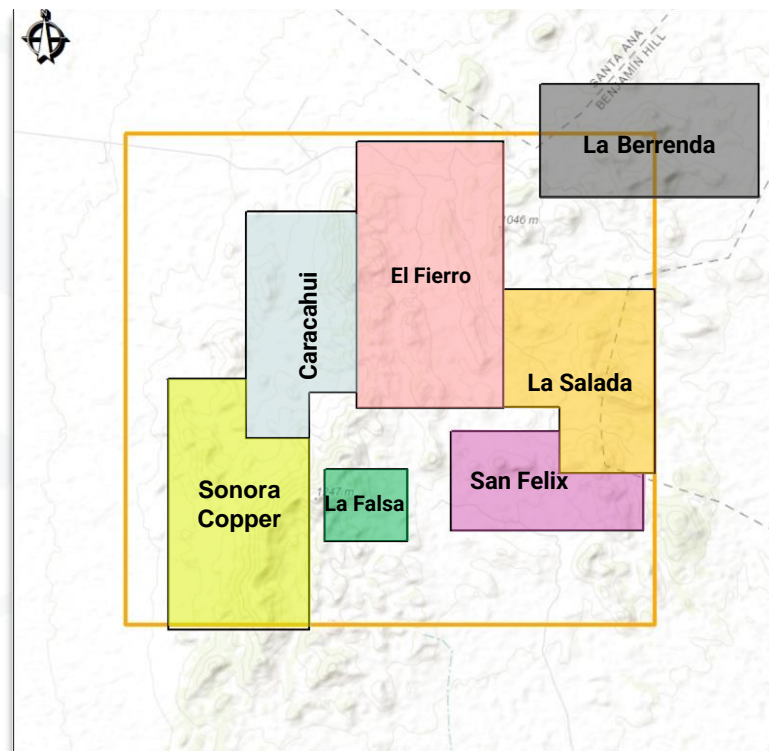


↗ The property is divided into seven exploration areas named after historical mining operations and sediment sampling anomalies.

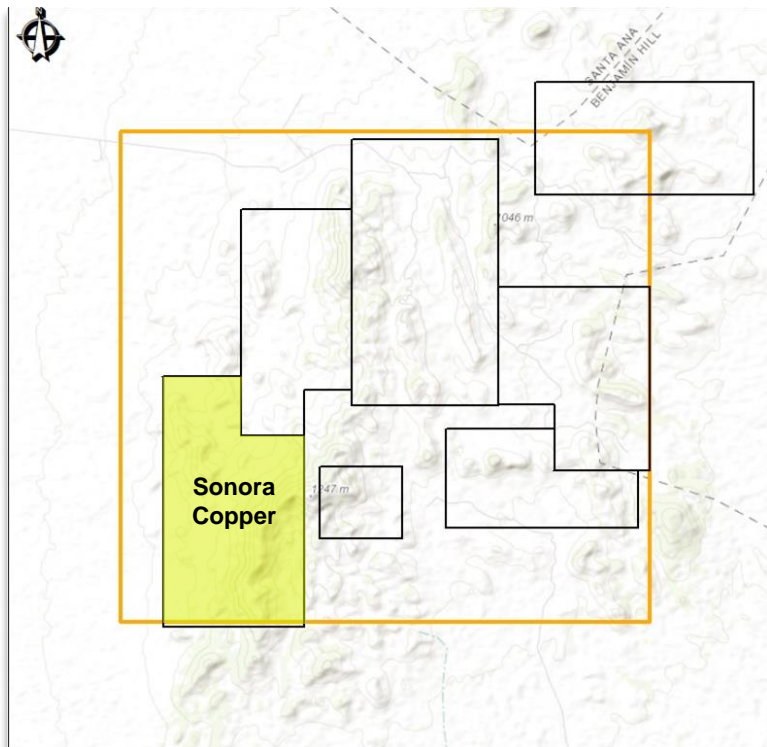
- Caracahui
- Sonora Copper
- El Fierro
- La Salada
- San Felix
- La Falsa
- La Berrenda

7 main exploration areas with unique mineralization styles:

- **Sonora Copper:** Two main parallel breccia-veins up to 15m thick and 3.5km long, surrounded by mineralized stockwork
- **Caracahui:** Seven intersecting mineralized structures up to 5m thick and 3.6km long surrounded by a stockwork zone up to 450m across
- **El Fierro:** A 2 km X 3.5 km area with 6 veins discovered so far including an iron rich gold skarn occurrence
- **La Salada:** Mineralized trend that includes veins, breccias and stockwork that can be traced over 750m length and 40m in width.



MAIN EXPLORATION AREAS



Sonora Copper - Gold Highlights

LOCATION	SAMPLE	EAST	NORTH	Au g/t	Ag g/t	Cu %	Au Equi
Guadalupe Adit	SG2948	494911	3341683	9.6	57.9	0.5	10.3
Guadalupe Adit	SG2949	494915	3341693	8.4	156.9	0.3	10.5
Cascabel Adit	SG2990	494924	3341704	7.7	122.1	0.4	9.3
Sonora Copper Area	SG1775	494854	3341698	3.6	57.5	1.3	4.4
Sonora Copper Area	SG1249	494622	3342139	3.5	6.3	0.0	3.6

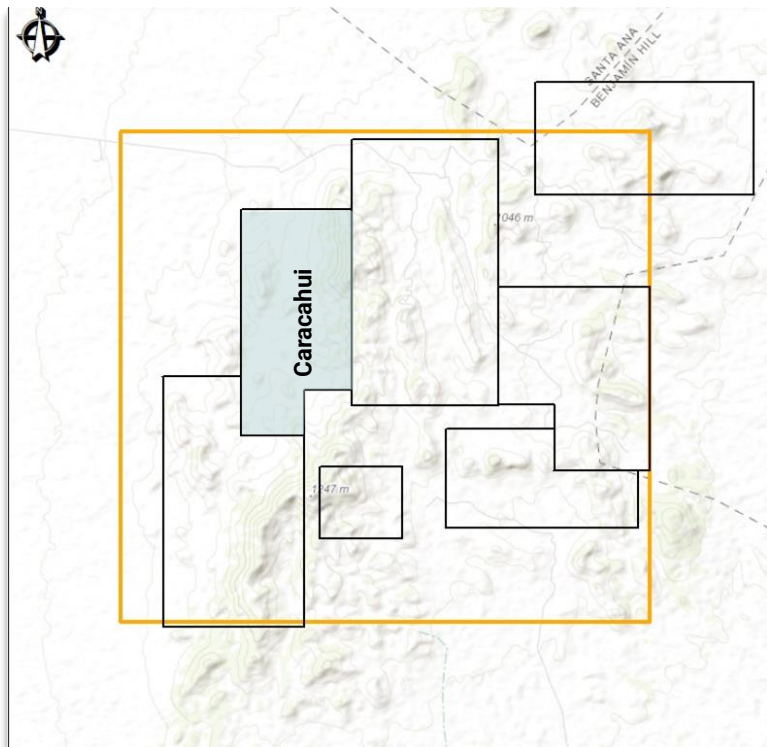
Sonora Copper - Copper Highlights

LOCATION	SAMPLE	EAST	NORTH	Au g/t	Ag g/t	Cu %	Au Equi
Sonora Copper Area	SG378	494840.99	3341958.7	0.2	24.6	4.3	0.53
Guadalupe Adit	SG2956	494917	3341713	0.38	23.8	4.3	0.7
Guadalupe Adit	SG2953	494917	3341716	0.33	14.1	3.5	0.5
Cascabel Adit	SG2999	494891	3341723	1.52	32	2.9	1.9
Cascabel Adit	SG2919	494914	3341642	1.29	22.4	2.5	1.6

Sonora Copper - Silver Highlights

LOCATION	SAMPLE	EAST	NORTH	Au g/t	Ag g/t	Cu %	Au Equi
Cascabel Adit	SG2984	494920	3341691	0.6	169.3	1.2	2.8
Guadalupe Adit	SG2949	494915	3341693	8.4	156.9	0.3	10.5
Cascabel Adit	SG2923	494916	3341647	1.3	134.2	0.5	3.0
Cascabel Adit	SG2990	494924	3341704	7.7	122.1	0.4	9.3
Sonora Copper Area	SG2306	494943	3341777	1.2	98.2	2.4	2.5

MAIN EXPLORATION AREAS



Caracahui - Gold Highlights

LOCATION	SAMPLE	EAST	NORTH	Au g/t	Ag g/t	Cu %	Au Equi
Caracahui	LW-804	495574	3345411	31.4	158.1	1.0	33.5
Caracahui	GPM-0676	495578	3345330	16.2	16.5	0.0	16.4
Caracahui	SG2696	495812	3346680	15.9	2.6	0.4	15.9
Caracahui	GPM-0682	495569	3345405	15.1	139.1	0.5	17.0
Caracahui	SG950	495187	3344344	8.8	1.8	0.0	8.8

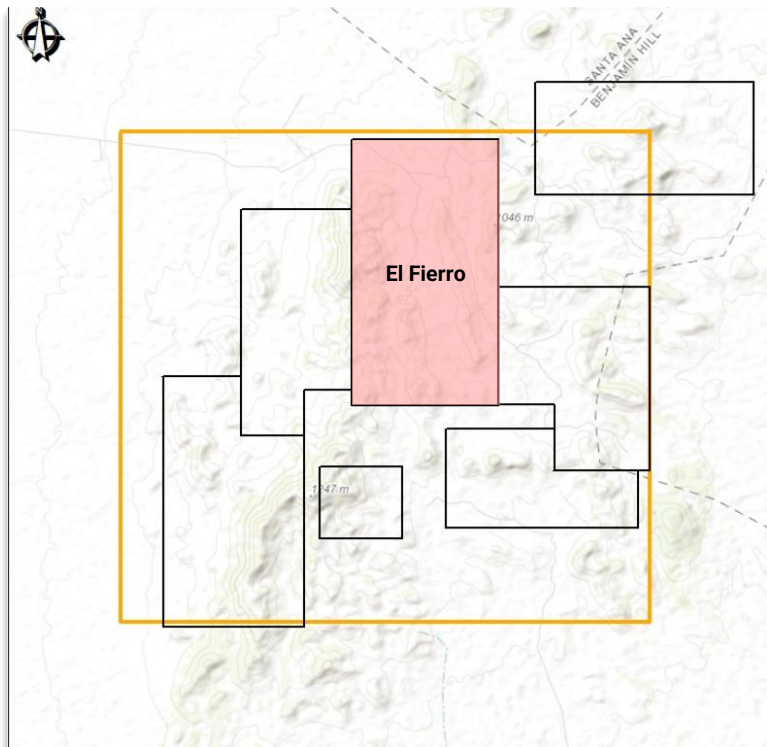
Caracahui - Copper Highlights

LOCATION	SAMPLE	EAST	NORTH	Au g/t	Ag g/t	Cu %	Au Equi
Caracahui	SG2432	496200	3344735	1.7	15.4	10.2	2.0
Caracahui	SG923	495630	3344567	0.6	76.5	8.3	1.7
Caracahui	SG3250	497542	3345953	2.7	93.8	8.0	4.0
Caracahui	SG2652	496306	3346466	0.2	25.7	6.7	0.5
Caracahui	SG3228	496801	3345648	0.4	90.3	4.5	1.6

Caracahui - Silver Highlights

LOCATION	SAMPLE	EAST	NORTH	Au g/t	Ag g/t	Cu %	Au Equi
Caracahui	SG2984	494920	3341691	0.6	>200.0	1.2	0.7
Caracahui	SG2949	494915	3341693	8.4	172.5	0.3	0.2
Caracahui	SG2923	494916	3341647	1.3	158.1	0.5	31.4
Caracahui	SG2990	494924	3341704	7.7	140.1	0.4	0.5
Caracahui	SG2306	494943	3341777	1.2	139.1	2.4	15.1

MAIN EXPLORATION AREAS



El Fierro - Gold Highlights

LOCATION	SAMPLE	EAST	NORTH	Au g/t	Ag g/t	Cu %	Au Equi
El Fierro	SG3209	498258	3346704	20.0	6.3	0.1	20.1
El Fierro	SG2063	497487	3347057	9.5	22.9	0.5	9.8
El Fierro	SG2203	497635	3347051	7.5	16.9	0.7	7.7
El Fierro	SG2066	497583	3347053	3.9	13.5	0.7	4.1
El Fierro	SG1757	497215	3347066	3.7	200.0	1.9	6.3

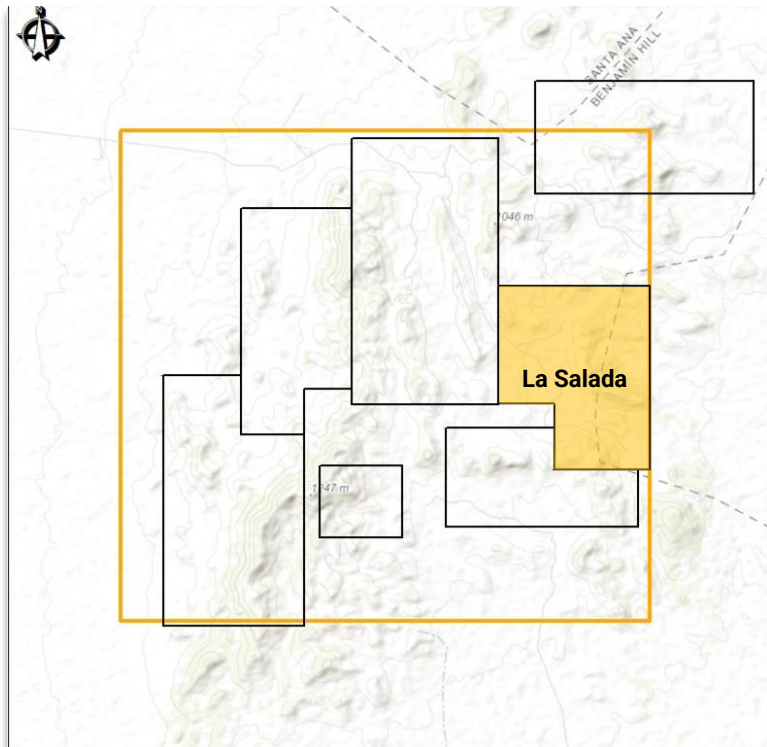
El Fierro - Copper Highlights

LOCATION	SAMPLE	EAST	NORTH	Au g/t	Ag g/t	Cu %	Au Equi
El Fierro	SG2469	495959	3344427	0.1	79.7	12.2	1.1
El Fierro	SG3085	497616	3346199	1.7	275.0	8.4	4.4
El Fierro	SG3068	497217	3346411	0.2	358.0	6.4	2.8
El Fierro	SG3038	497674	3346778	0.9	84.1	6.1	2.0
El Fierro	SG3141	497018	3346197	0.1	41.0	4.8	0.7

El Fierro - Silver Highlights

LOCATION	SAMPLE	EAST	NORTH	Au g/t	Ag g/t	Cu %	Au Equi
El Fierro	SG3068	497217	3346411	0.2	358.0	6.4	2.8
El Fierro	SG3085	497616	3346199	1.7	275.0	8.4	4.4
El Fierro	SG1757	497215	3347066	3.7	200.0	1.9	6.3
El Fierro	SG2533	496868	3346054	0.9	160.8	0.1	3.1
El Fierro	SG3169	496669	3346005	0.1	122.4	0.3	1.8

MAIN EXPLORATION AREAS



La Salada - Gold Highlights

LOCATION	SAMPLE	EAST	NORTH	Au g/t	Ag g/t	Cu %	Au Equi
La Salada	SG1794	500692	3344854	10.6	3.4	0.0	10.6
La Salada	SG1797	500655	3344890	10.0	5.9	0.0	10.1
La Salada	SG1784	500808	3344672	7.9	19.4	0.1	8.2
La Salada	SG1805	500475	3345036	3.8	2.4	0.0	3.8
La Salada	SG1787	500803	3344710	3.1	8.4	0.0	3.2

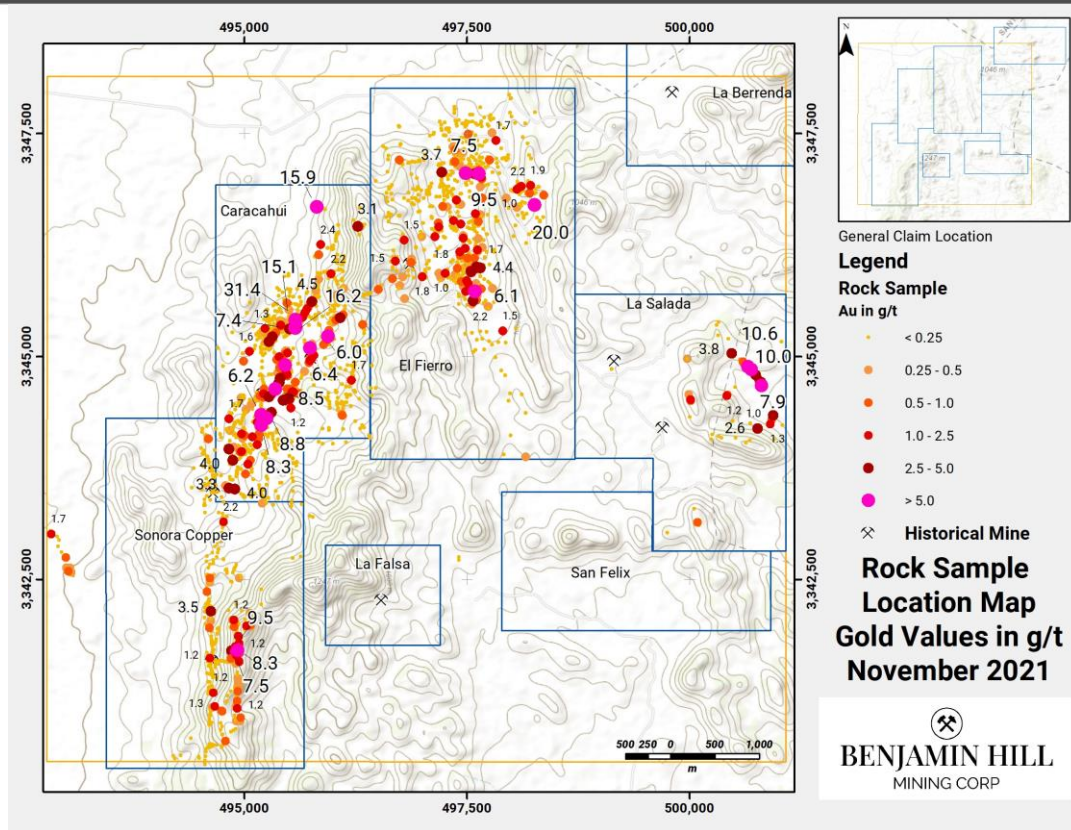
La Salada - Copper Highlights

LOCATION	SAMPLE	EAST	NORTH	Au g/t	Ag g/t	Cu %	Au Equi
La Salada	GPM-0160	499318	3345090	0.0	12.8	1.0	0.2

La Salada - Silver Highlights

LOCATION	SAMPLE	EAST	NORTH	Au g/t	Ag g/t	Cu %	Au Equi
La Salada	SG3068	497217	3346411	0.6	54.2	0.0	1.3
La Salada	SG3085	497616	3346199	2.6	35.2	0.1	3.1
La Salada	SG1757	497215	3347066	2.4	30.7	0.0	2.8
La Salada	SG2533	496868	3346054	0.1	29.2	0.3	0.5
La Salada	SG3169	496669	3346005	2.5	27.9	0.0	2.9

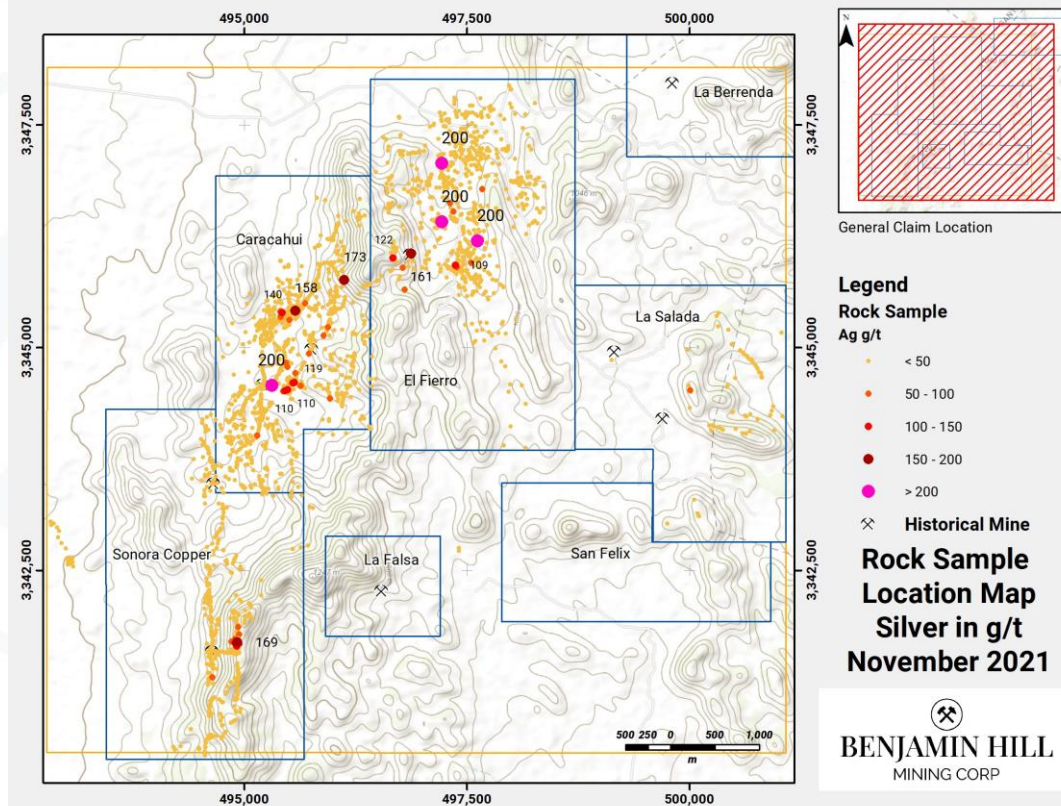
WIDESPREAD GOLD MINERALIZATION



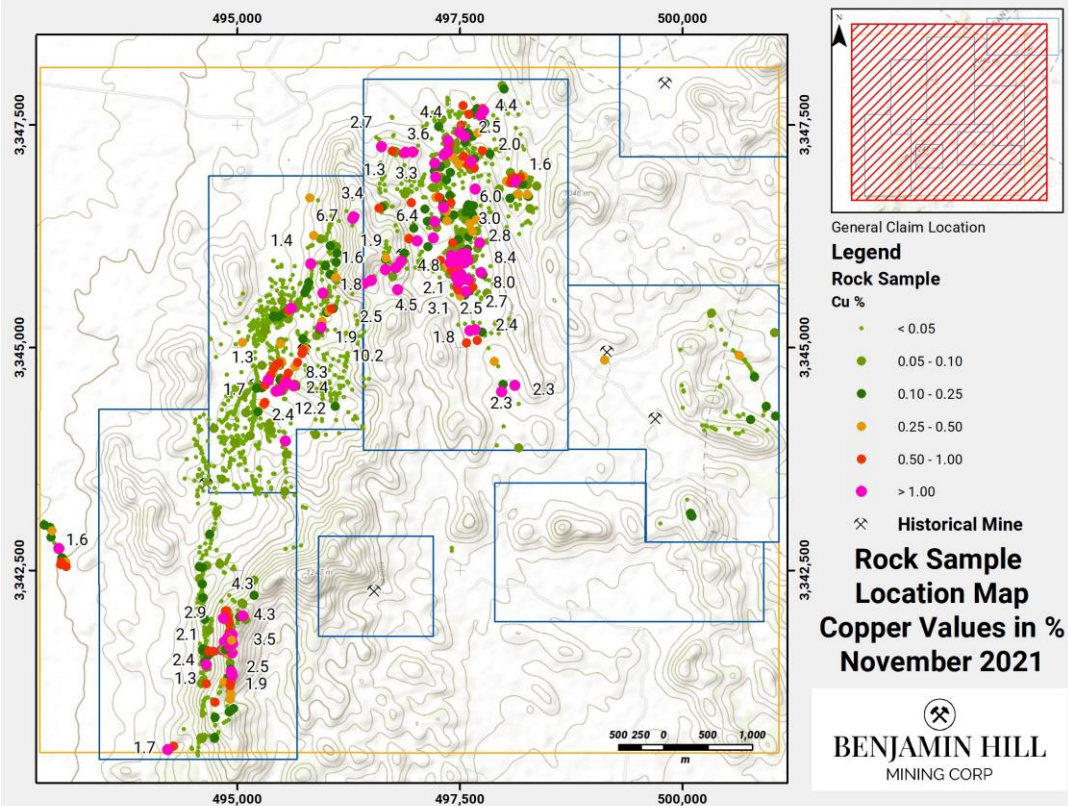
- **Mineralized structures mapped over 7.5km** strike length
- **Extensive sampling campaign Oct 2020 – Jul 2021** revealed widespread **gold** occurrences across the western portion of the property
- **2438** Samples analyzed
- **Numerous surface samples** returned **gold** values up to **31.4 g/t**
- **La Falsa – La Berrenda – Antenas** areas not yet fully investigated; recent geochemical survey indicates local gold mineralization

WIDESPREAD SILVER MINERALIZATION

- **Mineralized structures** mapped over **7.5km** strike length
- **Extensive sampling campaign** Oct 2020 – Jul 2021 revealed widespread **Silver** occurrences across the western portion of the property
- **2438** Samples analyzed
- **Numerous surface samples** returned **Silver** values over **200 g/t**
- **La Falsa – La Berrenda – Antenas** areas not yet fully investigated; recent geochemical survey indicates local **Silver** mineralization

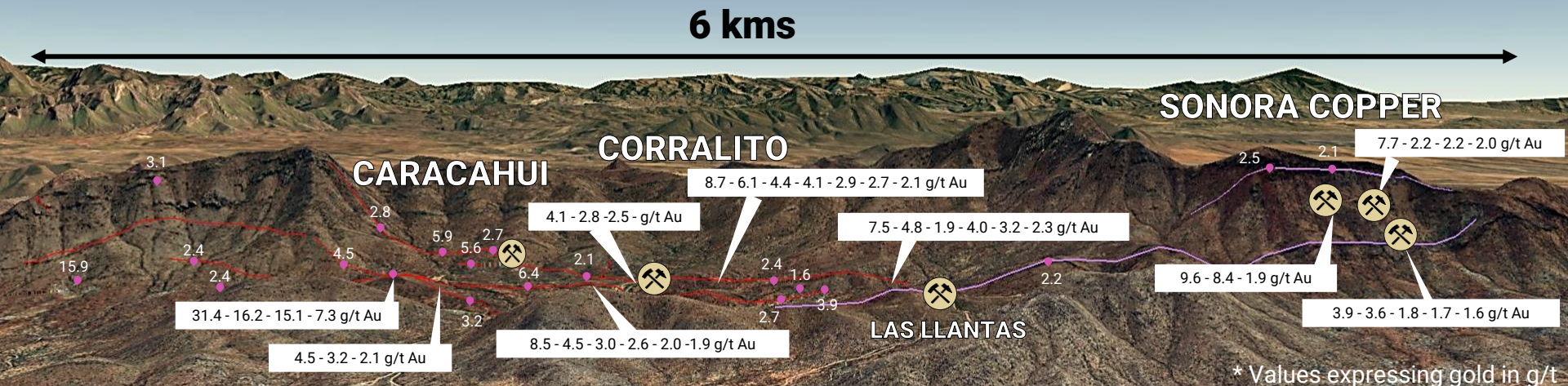


WIDESPREAD COPPER MINERALIZATION



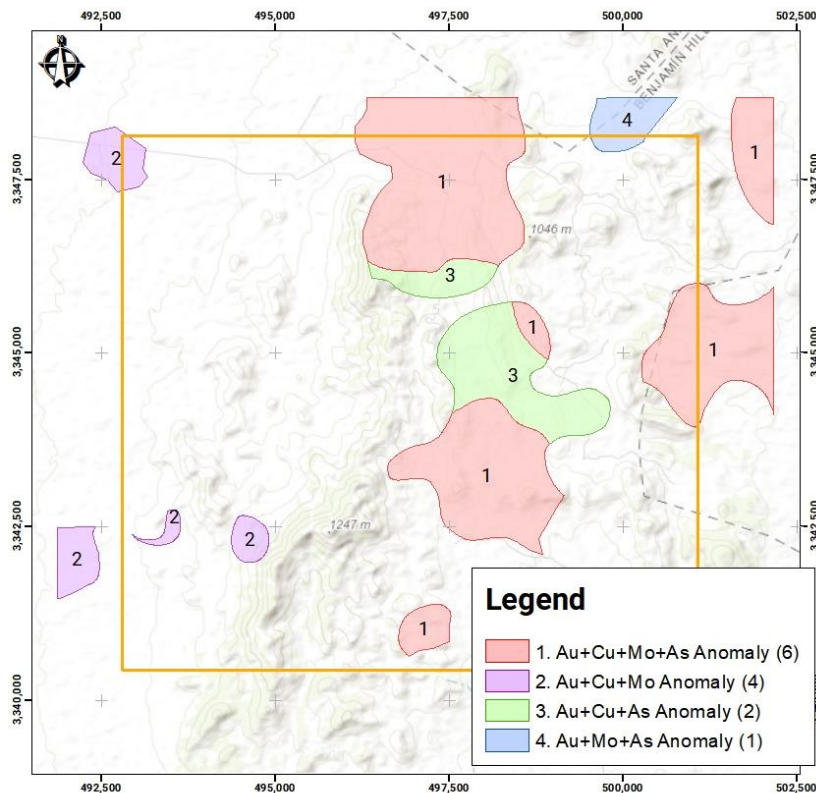
- **Mineralized structures** mapped over **7.5km** strike length
- **Extensive sampling campaign** Oct 2020 – Jul 2021 revealed widespread **Copper** occurrences across the western portion of the property
- **2438** Samples analyzed
- **Numerous surface samples** returned **Copper** values up to **12.2%**
- **La Falsa – La Berrenda – Antenas** areas not yet fully investigated; recent geochemical survey indicates local **Copper** mineralization

SAMPLING HIGHLIGHTS



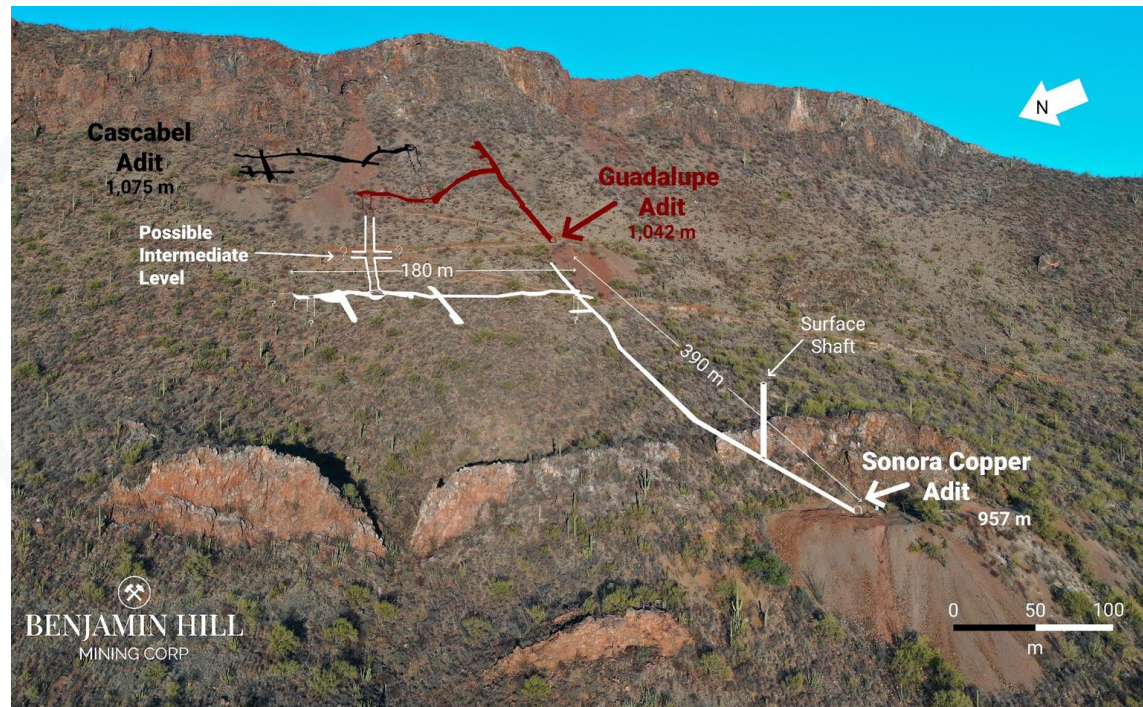
- Wide, steeply dipping, north-south trending mineralized structural panels are consistent through the property
- Mineralized intrusive at Sonora Copper/Gold trend thought to extend at depth to the north and south

- Four unique styles of geochemical enrichment discovered.
- Strong agreement between geochemical footprint and boots-on-the-ground rock sample results.
- Geochemical anomalies proven to be in close proximity to hard rock source.
- New exploration targets identified through geochemical survey work.
- Four geochemical correlation factors identified linking key elements of a hydrothermal enrichment and a magnetic source for the mineralization.

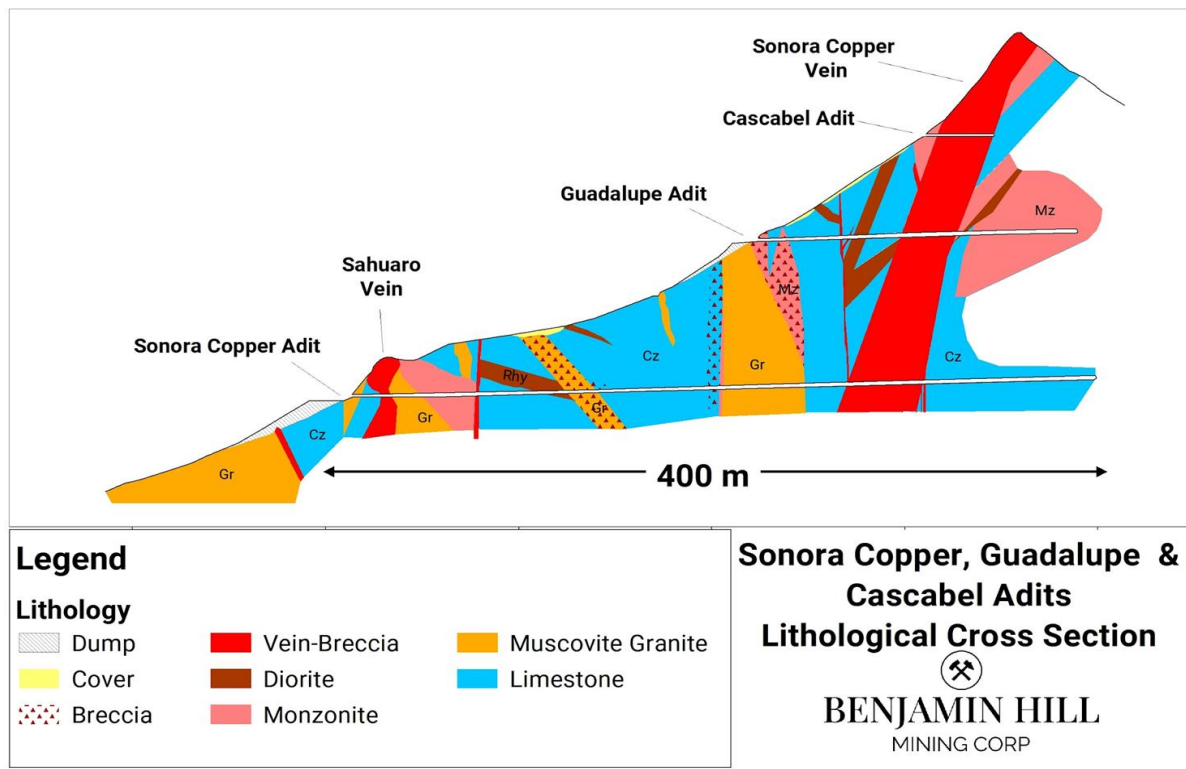


HISTORICAL MINES ON THE PROPERTY

- Three easily accessible adits
- More than 1,000 m of underground chip samples planned
- Shafts and raises communicate to additional unexplored mine levels

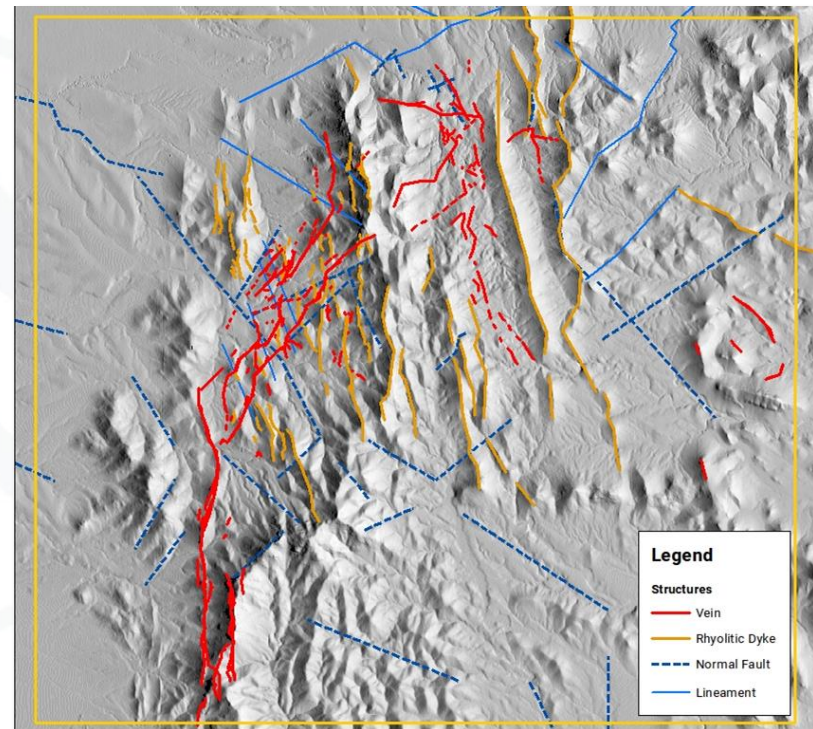


HISTORICAL WORKINGS CROSS SECTION



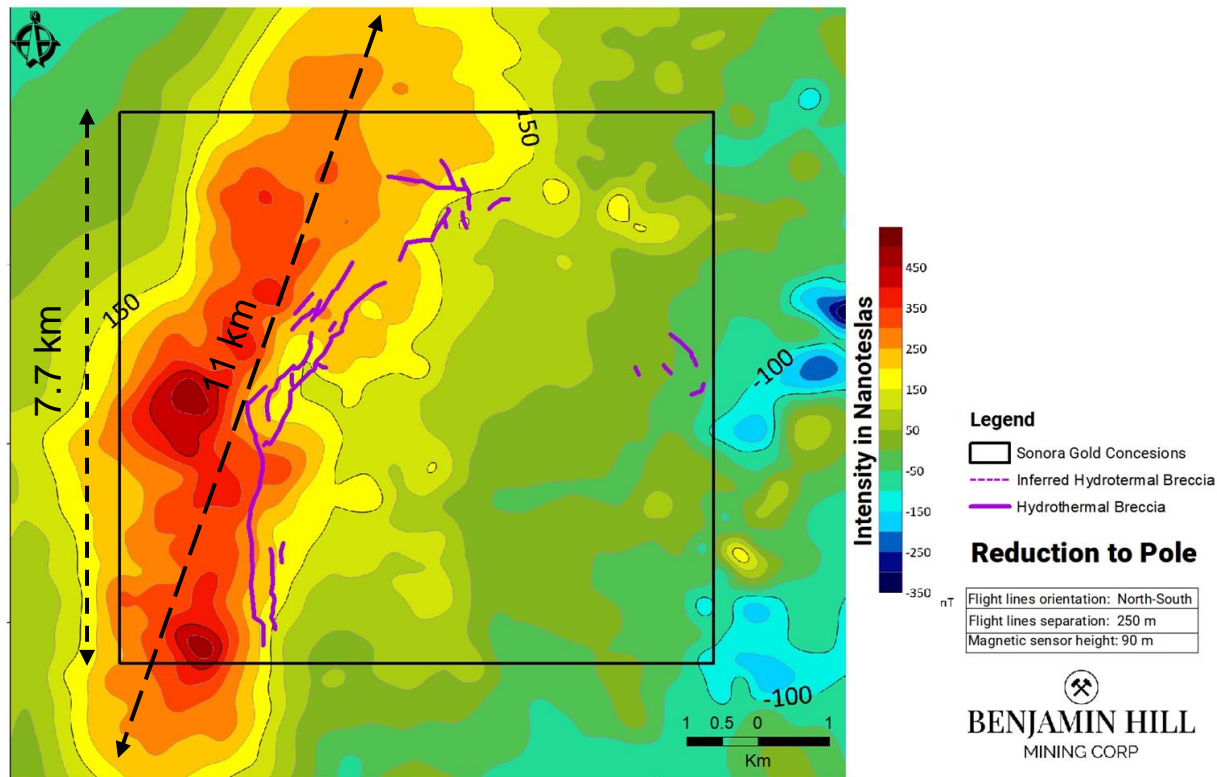
The presence of bimodal felsic & mafic diking and an intimate association with Au and Ag value, as well as domination by *quartz latite* dikes, suggests the mineralization trend is associated with a hybrid-mixed magma dike swarm. This is important because:

- Contemporaneous felsic and mafic is commonly associated with economic mineralization in many types of deposits, but most typically in bonanza grade epithermal gold deposits.
- Lamprophyres are commonly associated with very high-grade gold deposits.
- Hybrid-mixed magma dikes of intermediate composition commonly show a very close time/space relationship with bonanza grade epithermal systems.
- The association of mafic and felsic magmas suggests that a larger magma chamber at depth is underplated by a mafic magma heat and fluid source –characteristic of most important economic systems.



Aeromagnetic Survey

- Regional scale raw aeromagnetic survey data was obtained from the Mexican government and processed using custom filters
- The survey shows a strong magnetic anomaly on the west side of the property covering an area 11 x 6 km. The magnetic high indicates the strong probability of a buried intrusive body
- The buried intrusive is likely the fertile porphyry source of the surface mineralization



Samples collected from the major mineralization bearing structures through the property delivered the following data:

- The salinity and homogenization temperature are in the range of an epithermal system with evident magmatic influence.
- A hydrothermal system with a mixture of fluids, which indicate a source with an estimated depth of hundreds of meters which combined without current geophysical data, confirms the hypothesis of the existence of a buried porphyry with a high possibility for a metallic enrichment with Au-Cu porphyry potential structures.

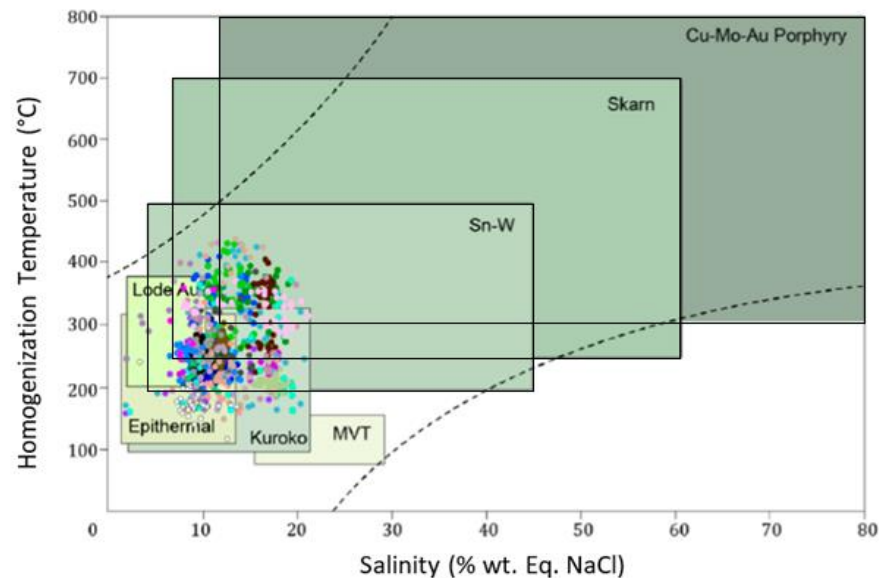
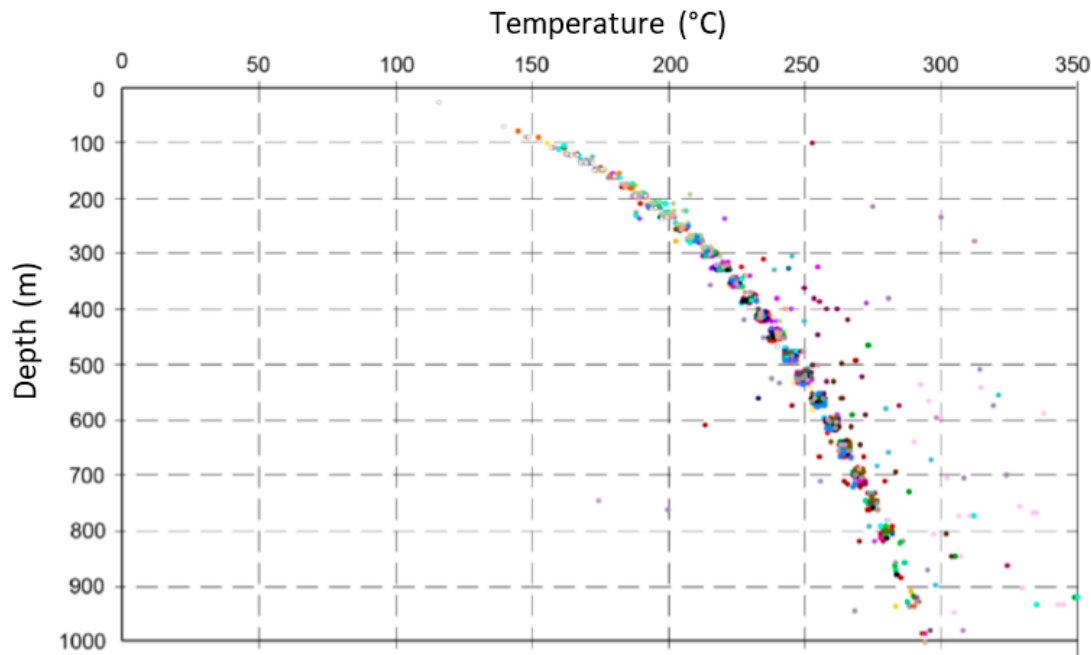


Diagram showing the relationship between Homogenization temperature (°C) vs Salinity (wt. % NaCl equiv.), as well as the ranges for different ore deposits.

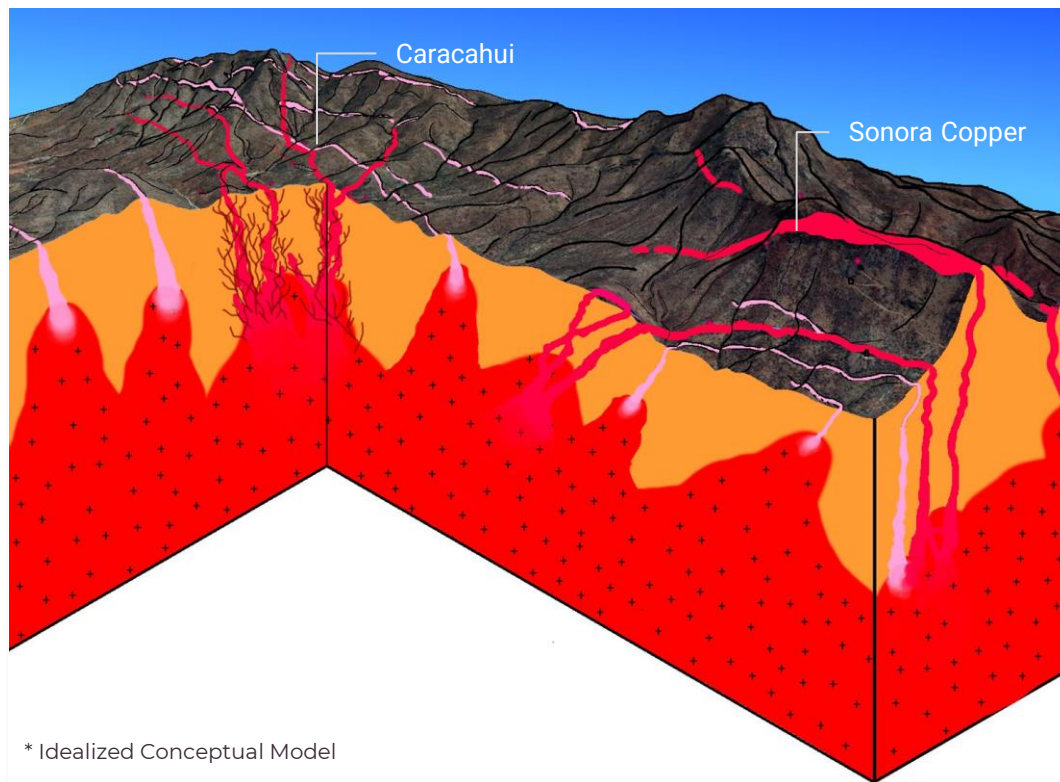


- Clear evidence of a high boiling system, which is associated to economical mineralization enrichment.
- Different exhumation depths which reside between 150 and 750 m in our mineralized structures, which encourages thinking of a vertical potential of 600 m with economical mineralization potential in our mineralized structures.






Diagram showing the relationship between homogenization temperature (°C) and depth (depth). Note: this depth corresponds to the theoretical depth of exhumed of each sample.

CONCEPTUAL GEOLOGICAL SETTING

-  **Prime Location**
Located in the Caborca Gold belt, several local producing mines with a combined 10-million-ounce gold resource
-  **Exciting Geology**
Mineralized structures at surface indicate a high probability for mineralization in the subsurface
-  **Extensive Mineralization**
The property hosts multiple Au-Cu occurrences and historical workings



Legend

-  Mineralized Structure
-  Stockwork
-  Fertile Porphyry
-  Country Rock
-  Rhyolitic Dyke

THE PAST 12 MONTHS

- Acquired rights to never before assembled land package
- Property wide stream bed sediment survey
- Reconnaissance geological mapping and sampling – Detailed surface and underground mapping and sampling of Sonora Copper mineralized zone
- Detailed surface mapping of Caracahui zone
- Reviewed preliminary assay results – better than expected gold values
- 43-101 Technical Report SEDAR filed
- Fluid inclusion study linked mineralization north to south large scale epithermal system
- Identify and prioritize drill targets
- Environmental drill permits granted for 80 drill pads

THE NEXT 12 MONTHS

- 11,000-meter drill program commencing Q1 2022
- Follow-up prospecting of stream bed sediment survey anomalies
- Detail mapping of the Caracahui and Sonora Copper/Gold zones to connect mineralized zones
- Underground mapping and channel sampling of Sonora Copper/Gold, Guadalupe and Cascabel historical adits

↗ **The Right Team**

Benjamin Hill has assembled an experienced group of mine finders with strong geological and exploration expertise in Sonora, Mexico

↗ **The Right Rocks**

The Sonora Property lies in the heart of the Caborca Gold belt and shares similar geology to the nearby San Francisco gold mine

↗ **The Right Time**

With the current rise in precious metal prices, Benjamin Hill is set to capitalize on the market's renewed interest in gold

↗ **Adding Capacity**

Benjamin Hill is recruiting to increase the size of its geo team and expedite the development of this prospective property

↗ **Systematic Exploration**

Applying scientific rigor to test our geological model and guide project development

↗ **Move Ahead Plan**

Define drillable targets and mobilize for drill program by late Q4 2021. Program commencing January 2022



BENJAMIN HILL



1050-124-11 Horseshoe Way
Richmond BC V7A 4X6

FOR MORE INFORMATION

BENJAMIN HILL MINING CORP

info@benjaminhillmining.com

benjaminhillmining.com